

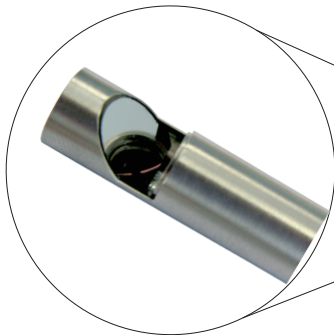


LAVISION

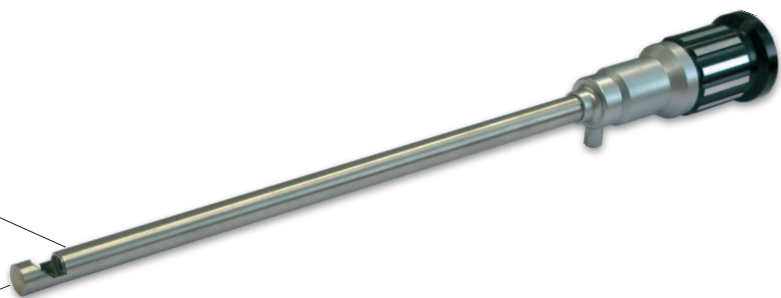
WE COUNT ON PHOTONS

Camera Endoscope

LaVision's camera endoscope
for flow and combustion analysis
in :
IC engines
Burners
Turbo Machinery



side port adapter for 90°
viewing direction



The **Camera Endoscope** for visible range (PIV) is designed to enable measurements and observations in enclosed areas with minimum requirements for optical access.

A small diameter of only 8 mm makes sure that imaging techniques can be used in applications where space limitations only allowed pointwise measurements before.

Easy upgrading for existing cameras and PIV systems is possible by the technique of coupling the endoscope via its standard, endoscope adapter to the standard M52 thread on filters or camera lenses (not included in endoscope kit).

Features

- Endoscopic kit including side port adapter**
- ▶ diameter 8 mm
 - ▶ length 200 mm \pm 5 mm
 - ▶ direction of view 0° (straight view) or 90° (side view)
 - ▶ lens system without illumination; incl. focusing optics
 - ▶ working distance 10 mm - ∞
 - ▶ field of view depends on camera lens and working distance
 - ▶ angle of view approximately 45°
 - ▶ temperature resistant to 120 °C (over effective length)
 - ▶ recommended lens for e. g. Imager intense camera: 50 mm,
for e. g. Imager pro X/ pro plus camera series: 85 mm

LAVISIONUK LTD

DOWNVIEW HOUSE/ GROVE TECHNOLOGY PARK
GROVE/ OXON/ OX12 9FF, UNITED KINGDOM

E-MAIL: SALES@LAVISION.COM / WWW.LAVISIONUK.COM

PHONE: +44-(0)-870-997-6532 / FAX: +44-(0)-870-762-6252

LAVISION GMBH

ANNA-VANDENHOECK-RING 19
D-37081 GOETTINGEN / GERMANY

E-MAIL: INFO@LAVISION.COM / WWW.LAVISION.COM

TEL. +49-(0)5 51-9004-0 / FAX +49-(0)551-9004-100

LAVISION INC.

211 W. MICHIGAN AVE. / SUITE 100
YPSILANTI, MI 48197 / USA

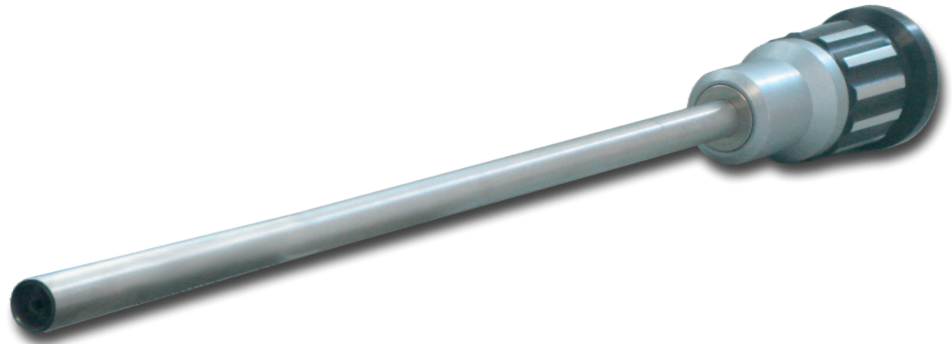
E-MAIL: SALES@LAVISIONINC.COM / WWW.LAVISIONINC.COM

PHONE: (734) 485 - 0913 / FAX: (248) 465 - 4306



LAVISION

WE COUNT ON PHOTONS



Features

Endoscopic kit for large angle of view

- ▶ diameter 8 mm
- ▶ length 217 mm \pm 3 mm
- ▶ direction of view 0° (only straight view)
- ▶ lens system without illumination; incl. focussing optics
- ▶ working distance 10 mm - ∞
- ▶ field of view depends on camera lens and working distance
- ▶ angle of view approximately 75 °
- ▶ temperature resistant to 120 °C (over effective length)
- ▶ recommended lens for e. g. Imager intense camera: 50 mm, for e. g. Imager pro X/ pro plus camera series: 85 mm

Ordering information

Part number	Description
1108440	Endoscope kit including side port adapter
1108770	Endoscope kit for large angle of view

Data provided by LaVision is believed to be true.
However, no responsibility is assumed for possible inaccuracies or omissions. All data are subject to change without notice.

Oct-14

LAVISIONUK LTD

DOWNVIEW HOUSE/ GROVE TECHNOLOGY PARK
GROVE/ OXON/ OX12 9FF, UNITED KINGDOM

E-MAIL: SALES@LAVISION.COM / WWW.LAVISIONUK.COM

PHONE: +44-(0)-870-997-6532/ FAX: +44-(0)-870-762-6252

LAVISION GMBH

ANNA-VANDENHOECK-RING 19
D-37081 GOETTINGEN / GERMANY

E-MAIL: INFO@LAVISION.COM / WWW.LAVISION.COM

TEL. +49-(0)5 51-9004-0 / FAX +49-(0)551-9004-100

LAVISION INC.

211 W. MICHIGAN AVE. / SUITE 100
YPSILANTI, MI 48197 / USA

E-MAIL: SALES@LAVISIONINC.COM / WWW.LAVISIONINC.COM

PHONE: (734) 485 - 0913 / FAX: (248) 465 - 4306